

POPULATION GROWTH

- At study initiation 2010 data & 2040 projections used
- In 2018, CMAP transitioned to ON TO 2050 and implemented projections in 2018
- Requested 2050 projections using pre-covid 2019 traffic counts
- ON TO 2050 update in 2026 will result in even lower 2050 projections

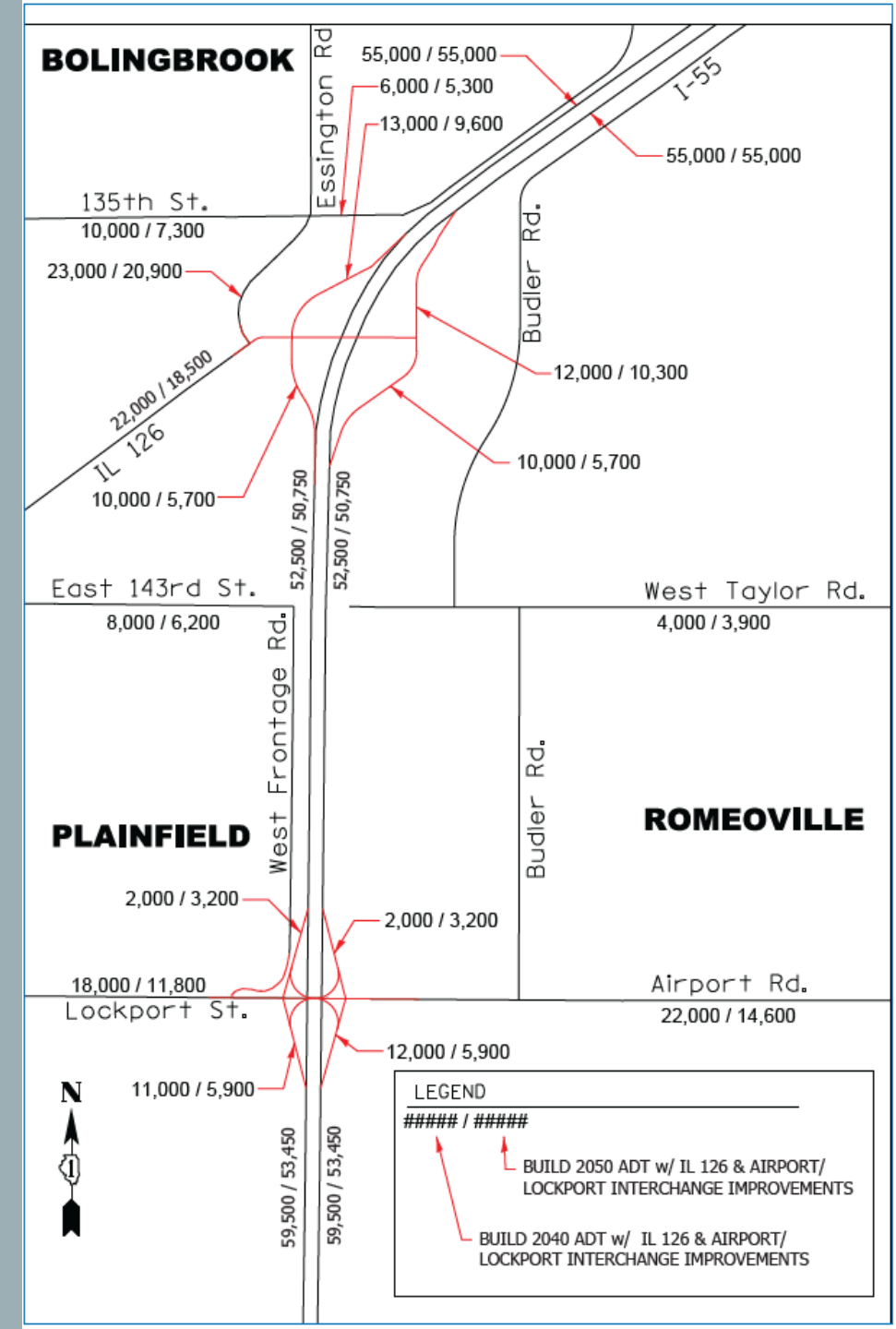
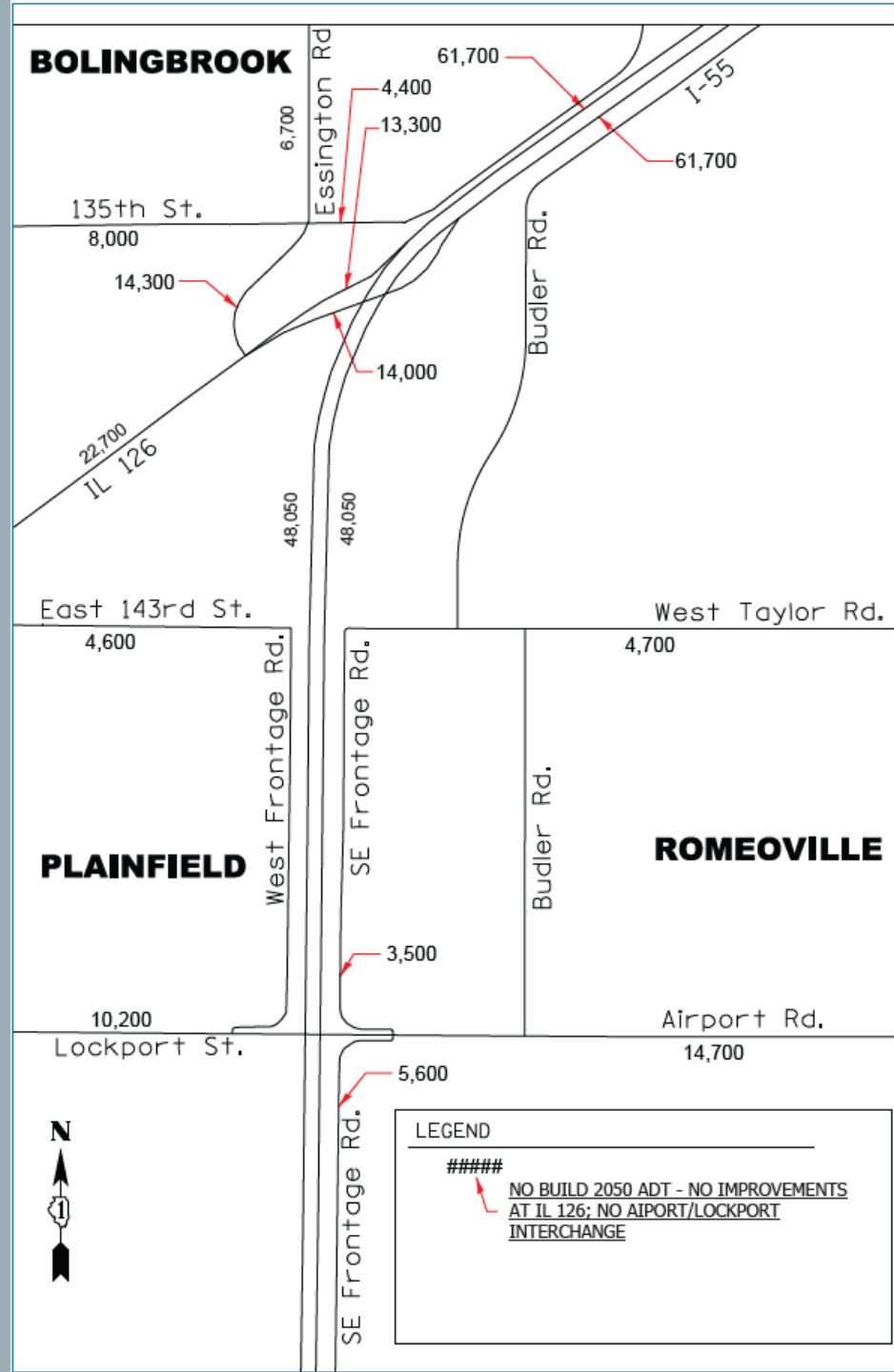
START OF THE STUDY:

POPULATION	2010	Projected 2040
Bolingbrook	73,366	116,462
Plainfield	39,581	82,490
Romeoville	39,680	74,068
TOTAL	152,627	273,021

2024 UPDATE:

POPULATION	2020	Projected 2050
Bolingbrook	73,922	85,552
Plainfield	44,762	60,791
Romeoville	39,863	43,744
TOTAL	158,547	190,087

UPDATED TRAFFIC VOLUMES



UPDATED TRAFFIC VOLUMES

- **9.1%** decrease in traffic volumes along Essington from 2040 to 2050 Build
- **30%** decrease in total ramp volumes at IL 126 & **33%** at Airport Rd/Lockport St
- Downtown Plainfield has an increase of 300 vehicles with an interchange vs to No Build

2050 TRAFFIC PROJECTIONS - UPDATED

ROAD SEGMENT	Current ADT	No Build 2050	Build 2050
MAINLINE I-55 (2-WAY)			
I-55 from IL 126 to Weber Road	102,300	123,400	110,000
I-55 from Airport Road to IL 126	75,200	96,100	101,500
I-55 from US 30 to Airport Road	75,200	96,100	106,900
I-55 South of US 30	67,200	89,500	89,100
Lockport St from IL 59 to I-55/or/ IL 59 to Plainfield Byp. (B1,B2) or West Frontage Rd	6,750	10,200	11,800
Lockport St from West Frontage Rd to SB I-55 Ramps (BLD ONLY)	6,750		16,700
Lockport St from West Frontage Rd to I-55 ROW (NB ONLY)	6,750	13,200	
Airport Rd between I-55 NB Ramps (or I-55 ROW in NB) and I-55 east frontage Rd	10,400	14,700	18,400
Airport Rd between I-55 east frontage and Budler Rd	10,400	13,600	16,400
Airport Rd between Budler Rd and Weber Rd	10,400	14,700	14,600
Airport Rd east of Weber Rd	5,900	7,000	7,700
IL 126 from Lockport St to IL 59	10,900	11,800	10,700
IL 126 from IL 59 to 143rd St	14,700	15,900	12,000
IL 126 from 143rd St to I-55	16,900	22,700	18,500